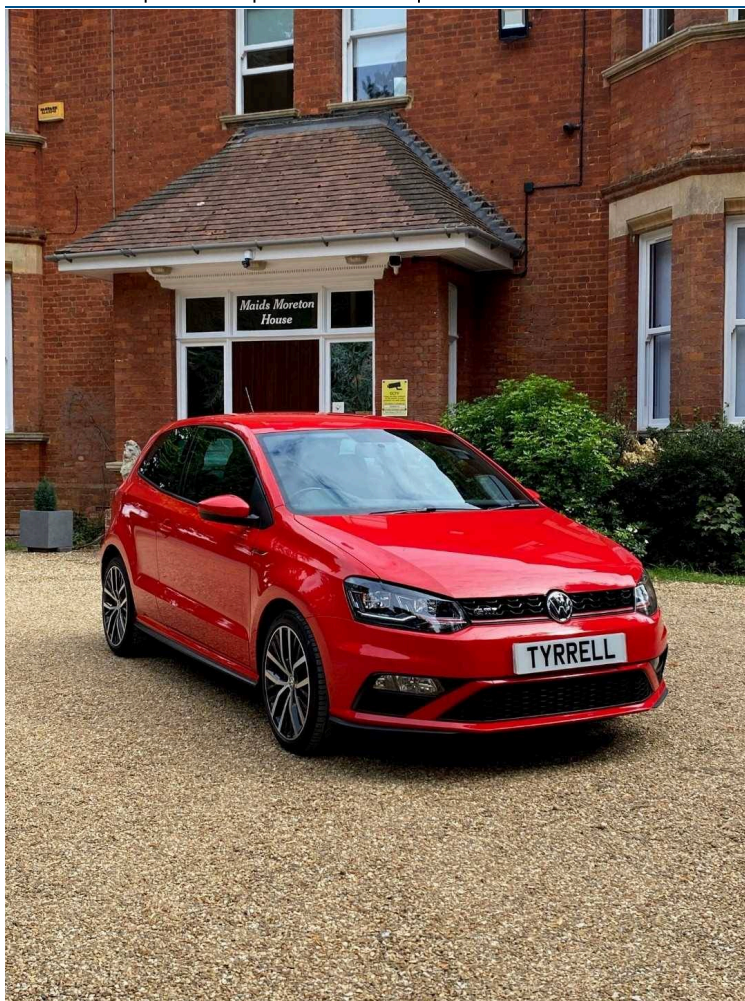




2016-16 | VOLKSWAGEN POLO

GTI DSG | Petrol | Semi Auto | RED



£11,995

Mileage **51,314 miles**

Fuel **Petrol**

Owners **4**

Engine **1.8 CC**

Transmission **Semi Auto**

Gears **7**

SPECIFICATIONS

Privacy Glass	Bluetooth Preparation (Phone)	Power Assisted Steering (PAS)
DAB Radio	Leather Steering Wheel	Cloth Upholstery
Electric & Heated Door Mirrors	Remote Central Locking	Alloy Wheels
Air Conditioning	CD Radio	Solid Paint
Front Fog Lights	Alarm	Cruise Control
Passenger Airbag	Cupholders	Load Area - Load Rings
Lumbar Support	Headlight Cleaning System	Height Adjustable Drivers Seat
Electronic Brake Assistance (EBA)	Front Electric Windows	Electronic Stability Programme (ESP)
Pollen Filter	Driver Airbag	Split Rear Seats
Anti Lock Brakes	12v Socket	Front Parking Sensor

TECHNICAL

Performance	
Top speed	147 mph
Engine power	189 bhp
Engine power	141 kw
Emissions Ice	
CO ₂ (g/km)	129 (g/km)
Fuel Consumption Ice	
MPG (combined)	50 mpg
MPG (extra urban)	60 mpg
Capacities	
Kerb weight	1067 kg

01280 821886

chris@tyrrellautomotive.com

Tyrrell Automotive Limited Vitalograph Business Park Maids Moreton Bucks MK18 1SW

Whilst every effort has been made to ensure the accuracy of the vehicle specification, some inaccuracies may occasionally occur. It is important that you do not rely solely on this information, but check with a member of the sales staff about any features which may affect your decision to buy the car.